

REC N-PEAK PACKAGING INFORMATION

These packaging specifications are applicable to the following products:

REC N-Peak Series

REC N-Peak Black Series

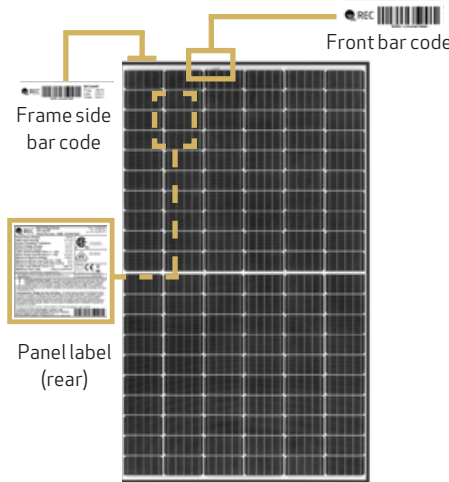
PALLET HANDLING



PALLET FRONT VIEW (DOUBLE STACKED)



PANEL IDENTIFICATION



PALLET SHIPMENT DIMENSIONS

Length of pallet:	1712 mm (68 in)
Width of pallet:	1045 mm (41 in)
Height of single pallet stack:	1220 mm (48 in)
Height of double pallet stack:	2440 mm (96 in)
Pallet weight:	40 kg (90 lbs)
Stack weight (pallet + panels):	ca. 650 kg (1450 lbs)

DELIVERY INFORMATION

Panels per pallet:	33
Panels per GP/high cube container (40 ft):	924 (28 pallets)
Panels per 13.6 m truck:	990 (30 pallets)
Panels per 53 ft truck:	1023 (31 pallets)

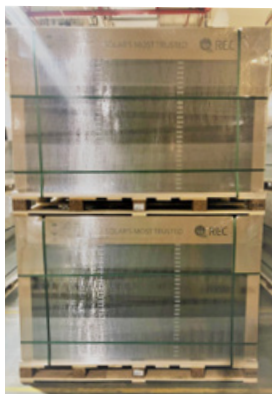
DELIVERY DOCUMENTATION

Documentation is located on short side of pallet.

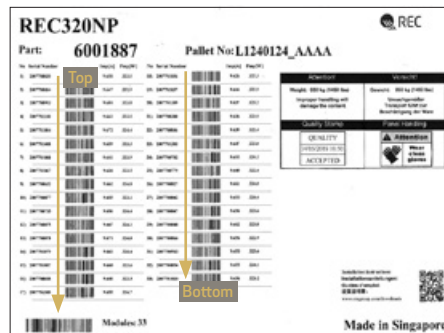
Pallet documentation includes:

- Module flash data
- Serial number
- Product name
- Watt class

PALLET SIDE VIEW (DOUBLE STACKED)



PACKAGING DOCUMENTATION



PACKAGING MATERIAL

Pallet:	Wood
Foam pad:	Polyurethane Polyether Polyol
Top cover:	Corrugated cardboard
Edge protectors:	Core board - Kraft
Corner pieces and spacers:	HDPE

STORAGE AND TRANSPORTATION

Stacking for storage:	2 pallets max
Stacking for transportation:	2 pallets max

Note: When double stacking pallets, ensure the upper pallet sits securely on the edge protector to avoid damage to the lower pallet during transportation or handling

Note: Pallets delivered stacked are not bound together.

PALLET STACKING



QUALITY

REC performs a quality check on all pallets before and during loading. Vehicles will only be loaded if they are deemed safe and serviceable. During transportation, the pallets are stably loaded in protected containers with air bags inbetween to secure them in position. The freight company and driver are responsible for ensuring suitable load safety for each delivery vehicle. Vehicles without suitable load safety measures will not be loaded. Loading without the use of air bags or loading belts to secure the pallets may lead to damage to the pallet(s) and/or module(s) during transportation which may invalidate the warranty. If using loading belts to secure pallets, ensure these are correctly fitted as over-tightening may cause damage to the modules or pallet(s). REC makes every effort to ensure environmentally-friendly packaging materials are used. Please recycle whenever possible.

MINIMUM FORK LENGTHS FOR TRANSPORTATION

		Single/Double stack only
Forklift	Long side	1.2 m (47 in) Loading & unloading of container only
	Short side	1.5 m (59 in)
Pallet jack	Long side	X
	Short side	1.5 m (59 in)

Note: Forks must be spaced a minimum of 500 mm apart. Handlers must ensure that vehicles used for REC pallets can handle the specified load safely.

Note: Specifications subject to change without notice