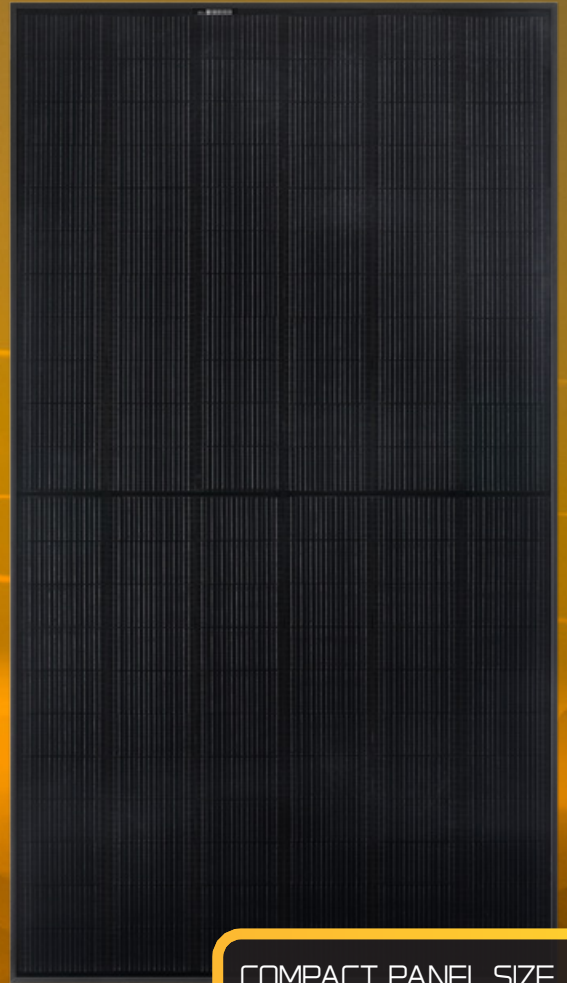


SOLAR'S MOST TRUSTED



COMPACT PANEL SIZE

REC ALPHA[®] PURE SERIES

ALPHA EXPLAINED

410 WP
222 W/M²



ELIGIBLE



LEAD-FREE
ROHS COMPLIANT

EXPERIENCE
α
PERFORMANCE

The REC Alpha Pure Series unites leading cell technologies to create a revolutionary, powerful and reliable solar panel to help you make more savings from your rooftop:



Heterojunction cells

- Combines the best of modern cell technology
- Highly efficient cells for high performance

N-type technology = more power

- No initial power loss (no LID)
- You get the power you pay for

Advanced gapless cell connections

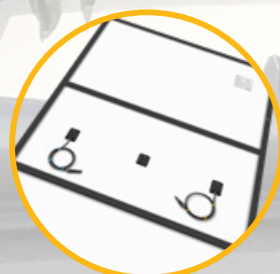
- Eliminates soldering for better build quality
- Reduces cell stress for long-term durability
- Increases power and keeps panel compact

Higher light transmission

- Special anti-reflective glass increases light transmission for higher power

Guaranteed better durability

- Withstands up to 7000 Pa
- Better protection against harsh weather



Improved looks

- Gapless cells for great aesthetics
- Full black appearance for an elegant look



High power density of 222 W/m²

- Generates more clean energy from the available space, e.g. rooftop

Higher efficiency at the hottest times

- Leading temperature coefficient for more production when the sun shines strongest
- Better performance in hot conditions



REC's iconic Twin Design

- Reduces internal resistance for more power and reliability
- Improved output when shaded

Environmentally-friendly

- Lead-free (RoHS compliant)
- Manufacturing with minimal carbon footprint

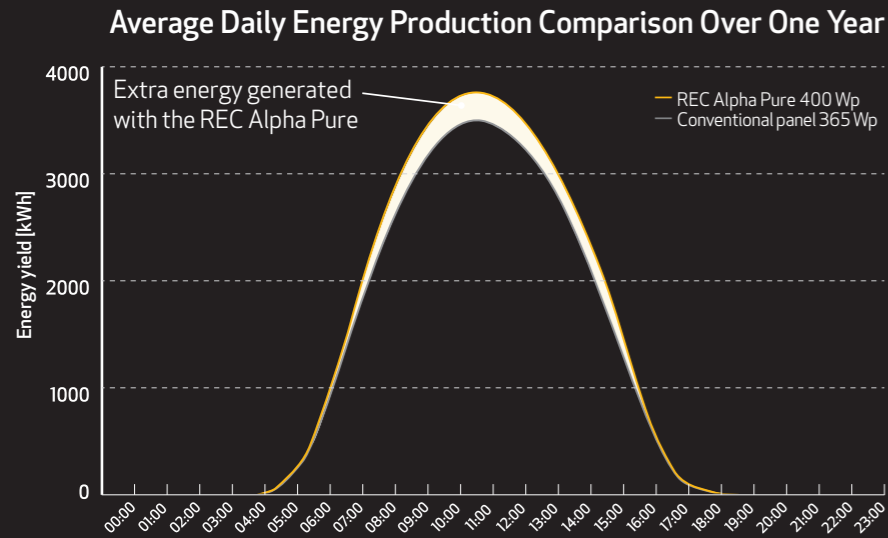


Exceptional quality

- Made in REC's state of the art, energy efficient facility in Singapore
- Highly automated production for improved efficiency and reliability
- Consistently one of the lowest warranty claims rate in solar

GREATER ANNUAL YIELDS FROM DAWN TO DUSK

The REC Alpha Pure packs in more energy than ever before. With no LID, a leading temperature coefficient and its high power density, it is ideal for increasing energy yields and making the most of available rooftop space.



Calculations based on simulation results for full calendar year, based on an 1.2 kWp system in Palm Springs, CA, USA. Peak REC Alpha Pure energy yield difference at midday: +6%, with an overall greater annual yield of 7.6%. Performance may vary dependent on location.

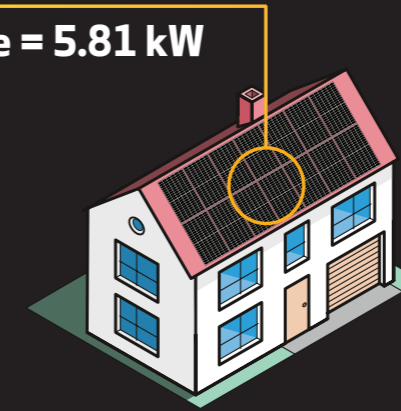
MORE POWER WITH THE REC ALPHA PURE!

MAXIMIZE SYSTEM POWER FOR MAXIMUM SAVINGS

Optimum use of space is key to a good solar installation. The REC Alpha Pure allows you to pack in as much power as possible, generating more energy and more savings on your bills.

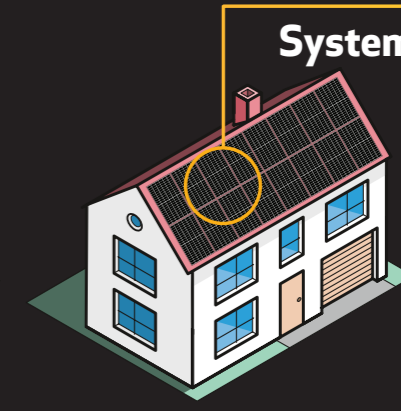
14 x 415 Wp conventional panels (> 1.87 m² panel area):

System size = 5.81 kW



16 x 400 Wp REC Alpha Pure (1.85 m² panel area):

System size = 6.40 kW

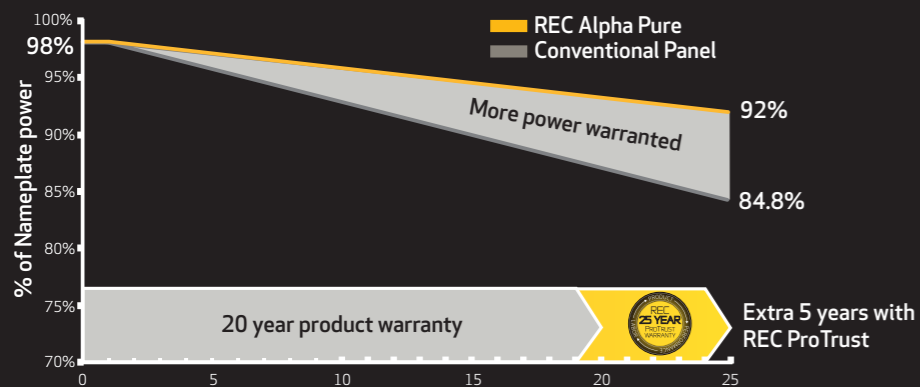


Based on an available roof area of 30 m².

The comparison is clear: in a regular residential installation, the REC Alpha Pure offers more power than conventional panels for more energy and more savings.

MORE WARRANTED POWER AFTER 25 YEARS

REC's consistently low claims rate justifies an outstanding warranty which reflects this leadership and supports our premium product quality.



Exclusive to REC Certified Solar Professionals, the REC ProTrust Warranty offers enhanced product and labor coverage*, ensuring peace of mind and a lifetime of high power generation:

- 25 years performance warranty
- 25 years product warranty
- Up to 25 year labor warranty*

*Conditions apply. See www.recgroup.com/protrust for more details

LEADING THE WAY TO A MORE SUSTAINABLE FUTURE

Lead and other toxins can be found in almost all solar panels today. That means all the panels produced in 2020 will potentially add around 10,000 tons of lead to the environment in the future! Using advanced manufacturing techniques, the REC Alpha Pure has removed the lead from all components so that it is compliant with Restriction of Hazardous Substances regulations (RoHS) across the world. This sets the pace in sustainability for solar and shows that a clean energy future without lead and toxins is possible.

Plant the seed for a sustainable future

No toxic leakage of lead after recycling

Our commitment to a lead-free and toxin-safe future



Cuts risks to humans and animals

Certified lead-free RoHS-compliant

Do even more than just producing clean energy



REC - SOLAR'S MOST TRUSTED

REC Group is an international pioneering solar energy company dedicated to empowering consumers with clean, affordable solar power through high-quality solar panels with a leading power density. As Solar's Most Trusted, REC is known for its patented innovations and multiple award-winning products with reliable long-term performance. The cornerstone for REC's strong reliability is advanced and highly efficient manufacturing using Industry 4.0 practices. Founded in 1996 in Norway, REC has always been committed to a low carbon footprint in its solar materials and panels. REC is headquartered in Norway with operational headquarters in Singapore and regional hubs in North America, Europe, and Asia-Pacific.



www.recgroup.com



Rev- C 11.21